

## Assignment

Date \_\_\_\_\_ Period \_\_\_\_\_

**Find the midpoint of the line segment with the given endpoints.**

1)  $(-10.3, 4.5), (0.3, 5.5)$

2)  $(-7.5, 6.8), (-10.2, -1.7)$

3)  $(10, -11.9), (11.7, -10.1)$

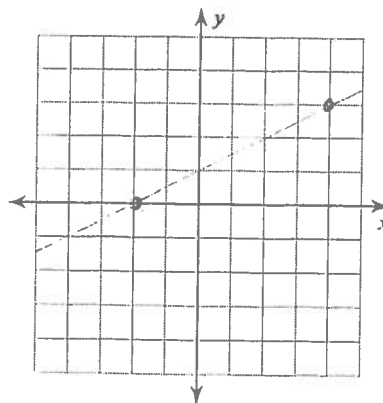
4)  $(-1.3, -8.2), (-3.9, 7.8)$

5)  $(3, -2.9), (0.4, -1.7)$

6)  $(11.4, 4), (11.4, -3)$

7) Find the midpoint of the line connecting the y-intercept of the line  $y = -3x + 5$  and the point  $(2, -1)$ .

8) Find the midpoint of the line between the x-intercept of the line and the point  $(4, 3)$ .



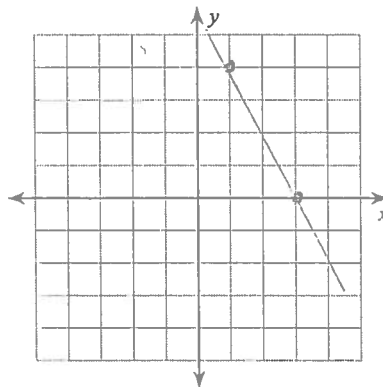
Find the distance between each pair of points.

9)  $(2, -7), (-1, 5)$

10)  $(-8, 6), (1, 7)$

11) Find the distance between the y-intercept of the line  $y = 2x - 3$  and the point  $(4, 5)$ .

12) Find the distance between the x-intercept of the line and the point  $(1, 4)$ .



Find the slope of the line through each pair of points.

13)  $(2, -6), (17, -11)$

14)  $(2, -7), (-13, -19)$

Write the slope-intercept form of the equation of the line through the given points.

15) through:  $(2, -1)$  and  $(3, 5)$

16) through:  $(-4, 5)$  and  $(-5, 0)$